



# THE CROWN HOTEL NAPIER



## Conference & Events

*"A place to meet & gather"*

**[www.thecrownnapier.co.nz](http://www.thecrownnapier.co.nz)**

**P: +64 6 833 8300 | F: +64 6 833 8330 | E: [conference@thecrownnapier.co.nz](mailto:conference@thecrownnapier.co.nz)**

**Corner Bridge Street & Hardinge Road, Ahuriri, Napier 4114**



The Crown Hotel's unique conference facilities are located in the beautifully refurbished, original 1932 Crown Hotel building and contemporary apartments. The conference facilities provide the ultimate combination of classic elegance and history to modern luxury. The flexible meeting spaces also provide an outdoor courtyard for breakouts, functions or cocktails and canapés. Our facilities are great for all occasions including corporate meetings/presentations, product displays, evening drinks and nibbles or social gatherings such as birthday high-tea parties or a club/friends get-together.

Functions are supported by the latest audio-visual equipment, complimentary wifi & broad-band internet, full catering and bar service and complimentary onsite car parking for all delegates.

The Crown Hotel's philosophy is a commitment of personalised service, professional staff that are welcoming and understand 'your' needs. Our flexible approach and innovative ideas ensure your clients are energised and inspired through the creation of a memorable and successful event and experience that leaves you with a sense that you want to return!

## Contents

---

✧ History/Facilities/Location	Page 3
✧ Accommodation	Page 4
✧ Conference Room Capacities	Page 5
✧ Conference Room Layout	Page 6
✧ Pricing and Equipment Hire	Page 7
✧ Catering Selection	
– Morning and Afternoon Tea	Page 8
– Lunch Menus	Page 9 & 10
– Packed Lunch on the Go	Page 11
– Finger food options	Pages 12
– Dinner Menus	Page 13 & 14
– Set Breakfast Menus	Page 15
– House Bar Beverage List	Page 16

For any further information on our conference facilities and services,  
or to discuss your meeting requirements, please contact Miss Ashleigh Hodgson.

**T:** +64 6 833 8300      **F:** +64 6 833 8330  
**E:** [conference@thecrownnapier.co.nz](mailto:conference@thecrownnapier.co.nz)



## History

---

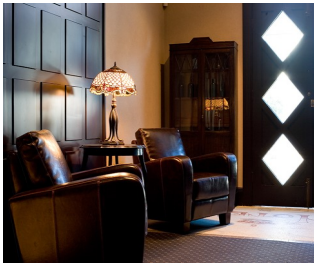
The original Crown Hotel opened for business in 1859 on the corner of Waghorne & Barry Street.

At that time, The Crown Hotel traded as a local pub that provided workman and sailors the best brands of wines & spirits, a first class billiard room, bagatelle tables and there were 17 letting rooms on the second floor. Livery & Bait Stables were also available.

It was destroyed by fire in the 1931 earthquake while the new hotel was being built. The building was to be three levels but was reduced to two levels due to the earthquakes damage.

The building has Heritage Protection and required a signoff from Art Deco Trust and has therefore retained its Art Deco exterior and interior detail such as the unique mosaic foyer, leadlight windows and stairway.

The mural in the Vautier Conference room was discovered under the wallpaper during renovations and was restored. They were thought to be originally painted on the walls in the 1960's. What was originally 17 letting rooms upstairs in the heritage building, are now three luxury heritage suites.



## Facilities

---

The Crown Hotel offers a range of services and amenities to ensure your time spent with us is an enjoyable and memorable experience.

- ✦ Complimentary Wifi
- ✦ Business Facilities
- ✦ Complimentary Fitness Centre
- ✦ Complimentary On-Site Parking for all delegates
- ✦ Complimentary Tesla Electric Car Charging Station
- ✦ Complimentary Secure Bike Storage
- ✦ Milk & Honey Restaurant
- ✦ Heritage House Bar & Courtyard

## Location

---

Overlooking the stunning waterfront in the historical seaside village of Ahuriri, Napier, with the sun, sea and landscape on your doorstep...location is everything!

Located only 5kms from Hawkes Bay airport and only several minutes from Napier CBD. The Crown Hotel is situated in the perfect location to ensure your delegates are revitalised and have an exceptional experience.

We are able to assist you and your delegates by organising transportation, no matter how big or small your group is. Simply let us know your arrival/departure details, or your transportation requirements during your stay.



## Accommodation

---

The Crown Hotel is an elegant boutique 4.5 star hotel with 39 guestrooms offering studios, 1 and 2 bedroom suites in an idyllic location where you can come to dine, dream and discover. A timeless hotel which combines modern design and history with our teams genuine personalized service.

Along with our conference facilities located in the refurbished original 1932 Crown Hotel building are three heritage suites offering art deco history with the ambience of sophistication and style or alternatively choose from our guestrooms in the modern and contemporary wing along the Ahuriri waterfront and village.

Enquire about our Corporate accommodation rates.



### FEATURES

Rejuvenate and Invigorate! Whether you're a business or leisure traveller, The Crown Hotel offers a range of services and amenities designed with you in mind. All guest rooms offer a wide range of luxurious amenities which include:

- ✧ Complimentary WIFI
- ✧ Air conditioning/heating
- ✧ Milk and Honey Restaurant & In-room dining
- ✧ Alfresco Hour at our House Bar 5pm-6pm daily
- ✧ Complimentary under cover parking
- ✧ Guest laundry facilities
- ✧ Dry cleaning services
- ✧ Wheelchair accessible rooms
- ✧ Fitness centre
- ✧ Work desk
- ✧ Outdoor balconies
- ✧ Mini bar supporting local Hawke's Bay products
- ✧ Coffee & Tea making facilities
- ✧ iPod docking stations
- ✧ Secure bicycle storage
- ✧ Tesla vehicle charging stations





## Room Capacities

Our flexible meeting spaces means we can do a variety of room layouts from Theatre Style through to Cabaret Style. Simply let us know the details of your meeting/function or what you are wanting to achieve and we will recommend the most effective layout for your event!

If you are not familiar with any of the below room layouts, please let us know and we can send you a floor plan for the particular setup.



Executive Boardroom





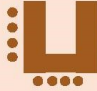




Vautier Room



Northumberland Room

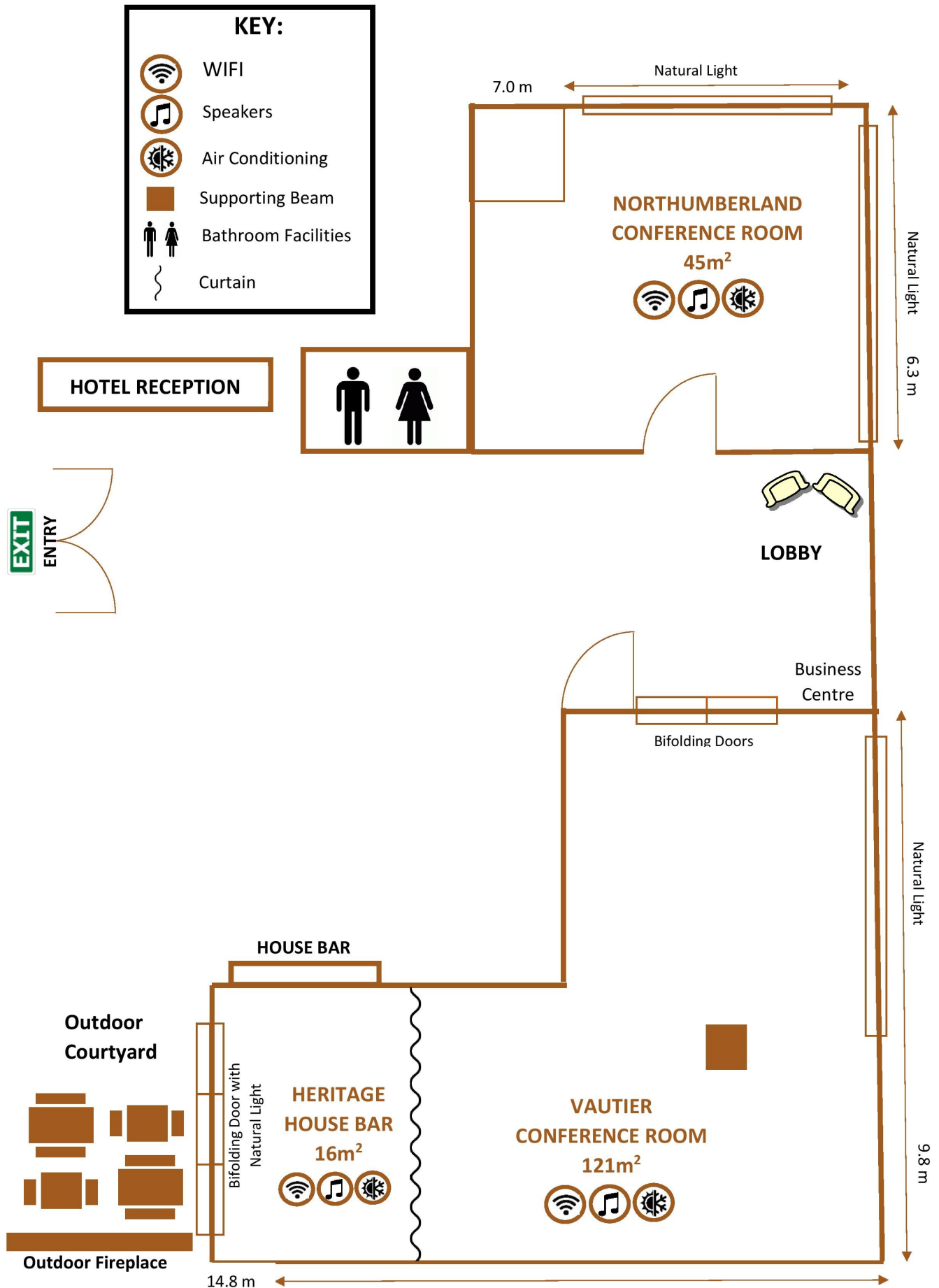


Courtyard and Bar

Room Name	m <sup>2</sup>	 Theatre Style	 Boardroom	 U Shape	 Classroom	 Cocktail	 Banquet	 Cabaret
Vautier Room	121m <sup>2</sup>	90	36	36	36	80	55	54
Northumberland room	45m <sup>2</sup>	35	14	15	12	40	20	18
Executive Boardroom (301 & 302)	27m <sup>2</sup>	15	10	-	-	30	10	-
One Bedroom Premium (104 & 204)	25m <sup>2</sup>	8	8	-	-	-	-	-
Heritage House Bar	16m <sup>2</sup>	-	6	-	-	10	-	-



# Conference Room Layout





## Pricing & Equipment

---

### ROOM HIRE

Please enquire regarding our room hire pricing.

Room hire includes complimentary wireless internet, on-site car parking, iced water, pens, notepads, mints & room set-up to the clients seating requirements.

### AUDIO VISUAL EQUIPMENT

On-site Data Projector & Screen (VGA Connection)	\$200
Projector Screen Only (will bring own Data Projector)	\$25
Projector Remote (with Laser Pointer)	\$25
Whiteboard & Pens	\$25
Electronic Whiteboard & Pens	\$40
Flipchart Stand, Pad & Pens	\$25
Flipchart Pads Only	\$20 each
50 Inch TV w/ HDMI Connection	\$150
Video/DVD Player	\$40
Audio Conferencing System Phone	\$50*
*Out-going call charges apply. The cost depends on the duration of the call and the location of the receiver.	
Microphone (Lapel) with speaker system	\$120
On-Site Laptop (HP Probook with Windows)	\$100
Laptop Speakers	\$30
Lectern	\$25
Onsite Technician	POA
Staging	POA

Terms & conditions apply.

All prices are in \$NZD, are inclusive of GST & are subject to change.  
Please advise if you require further equipment to the items listed above.  
We are able to source additional AV Equipment upon request.



## Morning & Afternoon Tea

All catering is provided by Milk & Honey Restaurant located on the ground floor of The Crown Hotel.

Savoury Items	Price	Sweet Items	Price
Savoury muffins	\$5.00	Seasonal fruit muffins	\$5.00
Tuna, cucumber & tomato sandwich	\$3.80	Pear, blueberry and polenta cake (GF)	\$4.50
Egg, mayonnaise & herb sandwich (V)	\$3.80	Pain au chocolate	\$5.00
Chicken & spinach tea sandwich	\$3.80	Cookie selection	\$2.50
Caramelised red onion & feta tartlet (V)	\$4.50	Custard square	\$5.50
Slow cooked beef & cheese pie	\$6.00	Chocolate brownies	\$4.00
Bacon & egg pie	\$5.50	Coffee walnut slice	\$4.50
Pork and caraway sausage rolls	\$4.50	Individual carrot cakes with cream cheese icing	\$4.50
Risotto cake (GF) (V)	\$4.50	Lemon slice	\$3.50
M&H date or cheese scones	\$3.50	Banana bread with yumyum butter	\$3.70
With cream and jam on the side	\$4.50	Seasonal fresh fruit platter	\$4.00
Croissant with ham & cheese	\$6.00	Bowl of whole fresh fruit	\$POA
Croissant with jam & butter	\$4.50		

## BEVERAGES

	Price per person
Fresh percolated coffee & selection of Dilmah Teas	\$4.00
Jugs of orange juice	\$12.00 per carafe
Selection of soft drinks	\$4.50
Energy Drink	\$5.00
Bottled water	\$4.50
Fruit smoothie (180mls)	\$4.00
Blueberry, oats, banana, yoghurt, honey	
Banana, almond, milk, dark cocoa	

*All prices are per person and inclusive of GST*

Our Conference Coordinator & Chef would be happy to discuss with you alternative options if you require something different.





## Working Lunch Menu

### CLASSIC LIGHT & QUICK

**\$23.50 per person**

The Classic Light & Quick lunch will give you a light yet nutritious meal that is designed to keep you energised & revitalised for the rest of the day. It is prepared using fresh & seasonal ingredients!

This lunch option includes:

- Chefs green salad (v)
- Tea Sandwiches (chicken, tuna or egg)
- Choice of Quiche (v) or Gourmet Pizza Slice (v)
- Fresh seasonal fruit platter
- Homemade sweet bite

*Note - Sandwiches can be prepared on Gluten Free bread upon request for those with dietary requirements.*

### GOURMET LIGHT & QUICK

**\$27.50 per person**

The same as the Light & Quick option above, however you may choose two gourmet fillings that come in a wholegrain roll, wrap, focaccia or white bread.

This lunch option includes:

- Choice of hot soup or Chef's gourmet salad (v)
- Two gourmet sandwiches (please choose two of the below fillings)
- Choice of Quiche (v) or Gourmet Pizza Slice (v)
- Fresh seasonal fruit platter
- Homemade sweet bite

Gourmet Fillings:

- ✧ Feta, onion relish, spinach & tomato (v)
- ✧ Grilled vegetable, feta and chermoula (v)
- ✧ Cheddar, ham, salad with tomato and cucumber
- ✧ Roast beef, shaved parmesan, rocket and tomato
- ✧ Roasted chicken, mayo, salad and beetroot
- ✧ Bacon, avocado, cos lettuce and chutney
- ✧ Smoked salmon, cream cheese, capers and baby spinach

*Sandwiches can be prepared on Gluten Free bread upon request for those with dietary requirements.*

Minimum of 12 people



## Gourmet Antipasti Platter

- ✧ **Rustic Platter**  
*Sliced cured cold meats, olives and pickles*
- ✧ **Cheese Board**  
*A selection of New Zealand and local cheeses, with dried fruits, grapes and crackers*
- ✧ **Specialty breads**  
*A selection of breads including focaccia bread and crostini's served with dips*
- ✧ **Antipasti salads**  
*A selection of antipasti salad bowls*
- ✧ **Asian platter**  
*Rice noodle salad, lemongrass poached chicken, roasted salted peanuts and herbs*
- ✧ **Moroccan platter**  
*Almond and roasted red pepper cous cous, cumin roasted carrots, mint yoghurt, olives*
- ✧ **Mexican platter**  
*Spicy pulled pork, warm tortillas, crunchy lettuce, tomato, chipotle, mayo, red onion pickles*
- ✧ **Summer platter (December—May)**  
*Tomatoes, basil, grilled courgette, cos lettuce, feta, roasted bread*
- ✧ **Winter platter (June—November)**  
*Roasted root vegetables, baby spinach, feta, toasted walnuts*

Choose 3 platters for \$26.00 per person

Choose 4 platters for \$30.00 per person

Choose 5 platters for \$33.00 per person

Minimum of 12 people

*In addition to the above items we can add a seasonal fresh fruit platter for \$4.00pp or a sweet bite for \$2.00pp upon request.*



## Packed 'Lunch on the Go'

**\$20.00 per person**

If your group would like to go off site to enjoy a quick and easy lunch, then this is the perfect option for you!

The 'Lunch on the Go' pack includes:

- ✧ Gourmet roll or sandwich
- ✧ Muesli Bar
- ✧ Sweet treat
- ✧ Piece of whole fruit
- ✧ Bottled water

Please choose **one** of the below roll or sandwich fillings:

- Ham
- Tuna
- Pastrami
- Vegetarian

If you would like to add additional items to your packed lunch, you can choose from any of the options below:

	Price per person
Orange Juice	\$5.00
Energy Drink	\$5.00
Pringles	\$5.50
Cashews	\$5.50
Peanut slab	\$3.50
Yoghurt	\$2.50

*Please advise if you have any dietary requirements so we can cater to your needs.*

Maximum of 20 people



## Finger Food

1. Spiced potato cake, yoghurt, Indian chutney *(gf)*
2. Cold smoked salmon and cucumber *(v) (gf)*
3. Gourmet pizza slice
4. Crispy mushroom dumplings with a lime mayonnaise *(v)*
5. Sumac toasted flatbread with halloumi cheese and pomegranate roasted grape *(v)*
6. Sushi rice cake with ginger, sesame, kewpie mayo and coriander *(v)*
7. Hot smoked salmon on pumpernickel bread, crème fraiche
8. Beef skewers glazed with maple & sesame *(gf)*
9. Spiced lamb kofte, mint yoghurt *(gf)*
10. Pork and caraway sausage rolls
11. Malaysian spiced chicken skewers with fresh herbs *(gf)*
12. Spicy prawn tail skewer *(gf)*
13. Arancini rice balls *(v)*
14. Thai vegetable rice paper rolls, mint, peanuts & dipping sauce *(v)*
15. Chocolate Brownies
16. Fresh seasonal fruit platter
17. Cheese selection with crackers and condiments
18. Selection of three breads and three dips

\$15.00 per person *(choose 3 items)*

\$20.00 per person *(choose 5 items)*

\$29.50 per person *(choose 8 items)*

Minimum of 12 people



## Tailored Buffet

Below some sample options for a buffet dinner. Additional options are available which will be based around the seasonal Milk & Honey dinner menu. Changes can be discussed with the Chef .

### ✧ Hot Dishes

- Classic Lasagna
- Chicken thigh wrapped with bacon and rosemary with roasted potatoes (GF)
- Roasted pork shoulder with fennel seeds and mixed roasted vegetables (GF)
- Braised lamb shoulder with lemon and thyme with roasted potatoes
- Side of salmon with lemon, herb, caper panko crumb (DF) (GF\*)
- Roast beef sirloin (GF) (DF)
- Hawke's Bay fish of the day, steamed with ginger and black beans on bok choy (GF) (DF)
- Whole confit chicken legs (GF) (DF)

### ✧ Salads

- Green salad with avocado, cucumber, herbs, orange pomegranate dressing (V) (GF) (DF)
- Asian noodle salad with sesame, pickled vegetables, mung beans and soy vinaigrette
- Roast vegetable salad with crumbled feta & chermoula (V) (GF) (DF\*)
- Cous cous salad with herb yoghurt dressing, honey roasted almonds, mint and grilled courgette (DF\*)
- Red grain salad with red rice, red quinoa, roasted red onion, beetroot and toasted walnuts (V) (GF) (DF)

### ✧ Desserts

- Individual crème brulee's (GF)
- Classic Tiramisu
- Vanilla bean pannacotta with fruit compote
- Chocolate cake with cream
- Seasonal fruit platter
- Thai sticky black rice pudding with mango, coconut butterscotch & toasted coconut (GF) (DF)
- Sticky South African Pudding

Choose 1 from each course \$45.00 per person

Choose 2 from each course \$55.00 per person

Choose 3 from each course \$65.00 per person

Minimum of 20 people

*All served with a fresh bread selection and dipping oil*



## Pizza Pazzi

Traditional Italian style pizzas that are artisan made using authentic ingredients and baked in a brick oven.

✧ Traditional Italian Pizzas

\$16.50pp, average of 5 slices per person

\$24.00pp, average of 8 slices per person

Margherita

*Tomato, mozzarella, fresh basil & extra virgin olive oil*

Romana

*Tomato, mozzarella, garlic, anchovy, basil, pecorino*

Spicy Salami

*Tomato, mozzarella, spicy salami, chilli & olives*

Red, Green & White

*Mozzarella, roast capsicum, red onion, salsa verdi*

✧ Special Italian Pizzas

\$20.00pp, average of 5 slices per person

\$28.00pp, average of 8 slices per person

Carnivora

*Tomato, mozzarella, chorizo, salami & ham*

Big Mushroom

*Tomato, mozzarella, button, Portobello & smoked mushrooms*

Smoke & Roast

*Smoked mozzarella, red onion, smoked garlic, rosemary, cherry tomatoes,*

Roast Chicken

*Tomato, roast chicken, mozzarella, cherry tomatoes, red onion, capers, fennel*

*Up to 6 pizza's will be provided each time to ensure the pizza's are fresh & hot*

*Mixed Green Salad or Fries are available for an additional \$3.00 per person*

**Available Only Wednesday—Sunday from 4pm.**

Minimum of 20 people





## Set Breakfast

If you would like to start your day off with a delicious breakfast in your chosen conference space prior to your event, please find below our breakfast buffet options:

### CONTINENTAL BREAKFAST

#### **\$20.00 per person**

Seasonal fresh fruit  
Toasted muesli  
Natural yoghurt  
Selection of cereals  
Full cream or skim milk  
Selection of breads & muffins with butter and preserves

### COOKED BREAKFAST

#### **\$27.00 per person**

Multi grain & sourdough toast with spreads  
Scrambled eggs  
Roast tomatoes  
Crispy bacon  
Pork sausages  
Hash browns  
Fresh fruit platter

Please see the below sides you can add to the cooked breakfast option.

*Prices are noted per person and include GST.*

	Price per person
Fresh percolated coffee & selection of Dilmah Teas	\$4.00
Orange Juice	\$12.00 per carafe
Homemade toasted muesli <i>(served with natural yogurt and fresh milk)</i>	\$5.00
Mushrooms	\$2.00
Fruit smoothie <i>(180mls)</i> <i>Blueberry, oats, banana, yoghurt, honey</i> <i>Banana, almond, milk, dark cocoa</i>	\$4.00

*An alternative menu is available if you would prefer to start your day off by having breakfast in our restaurant, Milk & Honey.*



## House Bar Beverage List

---

✧ <u>House Wines - Trinity Hill</u>	<u>Glass</u>	<u>Bottle</u>
White Label Sauvignon Blanc	\$9.00	\$42.00
White Label Syrah	\$9.00	\$42.00
White Label Chardonnay	\$9.00	\$42.00
✧ <u>Tukipo River Estate Wines</u>		<u>Bottle</u>
Fat Trout Chardonnay		\$49.00
Fat Duck Pinot Noir		\$64.00
✧ <u>Elephant Hill Wines</u>	<u>Glass</u>	<u>Bottle</u>
Elephant Hill Rose	\$10.00	\$48.00
Elephant Hill Syrah		\$56.00
✧ <u>Clearview Wines</u>		<u>Bottle</u>
Clearview Reserve Chardonnay		\$64.00
Clearview Old Olive Block Cab/Merlot		\$64.00
✧ <u>Trinity Hill Wines</u>		<u>Bottle</u>
Gimblett Gravels Black Label Syrah		\$59.00
White Label Pinot Noir		\$48.00
✧ <u>Champagne &amp; Sparkling Wine</u>		<u>Bottle</u>
Quartz Reef Methode Traditionelle (Central Otago)		\$50.00

### ✧ **BEER**

Tui (NZL)	\$6.50
Heineken Light (NLD)	\$7.00
Heineken (NLD)	\$8.00
Steinlager Pure (NZL)	\$8.00
Peroni (ITA)	\$8.00
Black Duck (Hawkes Bay)	\$8.50
The Force Pilsner (Hawkes Bay)	\$8.50

### ✧ **CIDER**

Kingston Apple Cider (Hawkes Bay)	\$8.50
-----------------------------------	--------

### ✧ **NON ALCOHOLIC**

Coke/ Diet Coke	\$4.00
Lemonade	\$4.00
Soda Water	\$4.00
Ginger Ale	\$4.00
Tonic	\$4.00
Ginger Beer	\$5.50
Orange Juice	\$5.00 (Glass)
Energy Drink	\$5.00
Orange Juice Carafe	\$12.00

### ✧ **SPIRITS WITH MIXER** \$9.00